

شركة لمار المحدودة
LAMAR L.L.C





Who We are?

We are Lamar Ltd, a leading company in the field of project service with great experience for twenty-seven years in the Gulf market and North Africa as a result of a strategic partnership between the Technology Group for Trade and Industry, Future Gate for Public transport services, Operation, Maintenance, Lamar Tourism for organizing Tourist trips/tours, Lamar Hospitality, Restaurant and Cafe services,.

Our Vision

Based on the vision of Kingdom of Saudi Arabia 2030, we have been inspired by giant development programs to serve state projects and private projects with technology that serve a vibrant society, a prosperous economy and an ambitious homeland.

Our Message

We have combined the resources and the ability to expand the company's activities to offer the best of honorable projects that benefit the development of our darling country, and our customers and Provide a high-quality services, based on the latest standards that are applied globally.

Lamar scope of work

Lamar company provides a range of services to various categories of customer, namely:

1- Private transport services within cities: Lamar provides private road transportation within the main cities of Kingdom of Saudi Arabia at specific set tariffs, which may vary according to operational schedules and the level of traffic.

2- Inside-city transportation services: Lamar company provides transportation services between the areas through a wide and regular network of routes, connecting more than 10 foundations

Lamar scope of work

3- "VIP EXPRESS" Premium Lamar service: Lamar company offers high-quality direct non-stop routes, providing special services for visitors throughout the trip, whose durations range from short to medium: - Direct Trips - Meeting room - Toilet -Entertainment screens - Hot drinks - Light meals - Charging points - Internet - Headphone sets

4- Specialized services : Lamar company provides a variety of transportation services across its vehicle fleet according to the needs of customers, including heritage sites visitor transportation services - Staff transportation - Tourism, groups and various events - Hourly or daily rental services - Long and short-term service contracts - Limousine services

5- Digital Services: One of Lamar company initiatives in smart mobility is to keep pace with Vision 2030 in raising the quality of life and lifestyles to provide digital mobility services throughout the Kingdom.

- **Autonomous vehicles: self - drive shuttles:**



Let's focus on **the future of transportation**

Value proposition:

- Reimagined cities
- Sustainability
- Infrastructure
- Compatibility
- Upgradeable
- Tailored
- All inclusive
- Low-volume MFG



Open API

- Cloud Data Storage
- Secure
- 5G Ready
- DSRC Ready
- Remote Access



Education



Corporate



Entertainment



Residential



Heritage site



Transportation



Hospitality



Medical

6-Wheel Chair Ramp:



Strategic Plan:

- On-demand Ride pooling and multimodal software, enabling cities and corporations to design future mobility concepts.
- Focuses on creating emission-free mobility solutions.
- Ensures accessibility and inclusivity for different customer groups.

Lamar Transportation Services

Lamar Services:

1.Transportation Busses(49 seats) :



| No | Item | Status |
|----|--------------------------------------|--------|
| 1 | Stickers | New |
| 2 | Mirrors | New |
| 3 | The doors | New |
| 4 | The windows | New |
| 5 | Driver Cabin | New |
| 6 | Seats | New |
| 7 | 2 Medium screen | New |
| 8 | 2 CCTV | New |
| 9 | Front bus o'clock | New |
| 10 | W.C | New |
| 11 | First AID kits | New |
| 12 | Sanitizers | New |
| 13 | Face masks | New |
| 14 | Fire Extinguishers (2) | New |
| 15 | Instructions stickers | New |
| 16 | Emergency glass breaker (1) | New |
| 17 | Door control emergency | New |
| 18 | Back seat cup holder | New |
| 19 | Dedicated Sound System DVD, USB, MP4 | New |

2. Transportation busses (31 seats):



| No | Item | Status |
|----|--------------------------------------|--------|
| 1 | Stickers | New |
| 2 | Mirrors | New |
| 3 | The doors | New |
| 4 | The windows | New |
| 5 | Driver Cabin | New |
| 6 | Seats | New |
| 7 | 1 Medium screen | New |
| 8 | 2 CCTV | New |
| 9 | Front bus o'clock | New |
| 10 | W.C | NO |
| 11 | First AID kits | New |
| 12 | Sanitizers | New |
| 13 | Face masks | New |
| 14 | Fire Extinguishers (2) | New |
| 15 | Instructions stickers | New |
| 16 | Emergency glass breaker (1) | New |
| 17 | Door control emergency | New |
| 18 | Back seat cup holder | New |
| 19 | Dedicated Sound System DVD, USB, MP4 | New |

3. Open top double-decker bus With driver:

- VIP tourist bus with tables and 53 seats
(London style)
- Regular tourist bus 68 seats



Guiding Tourism audio system with multilingual 8 languages for all heritages and tourism sites DVD, USB, MP4

Screen display at the top roof

Sound system

Internal Radio station

Free Internet WiFi

External screens display, for the event purpose

The VIP bus, contain tables (one table, 4 seats), with e-guider

Featured busses, contain single seats, no tables, each seat with e-guider

Busses come with AC, the top roof with removable roof

4. Transportation buses (21 seats)



The Coaster Deluxe adds to the touch of class.

Max Power

110kW

Coaster Deluxe 4.0L Turbo-diesel Automatic

Seating Capacity

22

Coaster Deluxe 4.0L Turbo-diesel Automatic

Deluxe INCLUDES

- 4.0L OHV Turbo-diesel with a 6-speed automatic transmission
- 17.5" wheels with 215/70 tyres
- Automatic Gliding Centre Door
- 22 Fabric Seats
- Window curtains
- Air conditioning

6.1" display audio

5. Transportation buses (16 seats) :



•Engine Specification

- Power 84 – 140 kW
- Horsepower 114 – 190 hp
- Horsepower 113 – 188 bhp
- Rev. at Max Power 3000 – 5000
- Torque 240 – 400
- Torque 67 – 295
- Rev. at Max Torque 1400 – 4000

Equipment

•Instrument Cluster

- Trip Computer
 - Display
 - Type Monochrome
 - Shape Square
- Speedometer Analogue
- Tachometer Analogue
- Fuel Gauge Analogue
- Coolant Temperature Analogue
- Odometer Limit 1,000,000 km/miles

6. Transport truck with driver (One Ton):



The 6-2L-CREW-CAB-AWD is available with Active Headrests, Adaptive Suspension Package, Airbags , Anti theft alarm, Central Locking, Glove Box Cooling, Leather Seats, Multi Information Display, Fog Lamp - Front and Rear, LED Headlights, LED Taillights, Power Windows - Front and Rear, Audio Controls on Steering Wheel, Auto Dimming Mirror, Automatic AC and AUX.

This American Truck comes with a 6.2-litre 8 Petrol engine that generates 420 horsepower and 623 Nm of torque.

6. Transport truck with driver (2,3 Ton):



NPR-HD (Diesel)

GVWR/GCWR: 14,500/20,000 lbs.

Class: 4

Body/Payload Allowance: 8,270-8,511 lbs.

Engine: 5.2-liter

Cab: Standard

Body Application: Up to 20 ft.

7- Special Needs Van with driver



Engine Special need A2 A2

Configuration Longitudinal front-mounted driving rear wheels

Cylinder capacity 2.5 litres (2,497cc)

Number of cylinders 4 in-line

Valve system DOHC, 4 Valves per cylinder

Intake system Wastegate Turbocharger (WGT) Variable Geometry Turbocharger (VGT)

Maximum power 100 kW @ 3800 RPM 125 kW @ 3600 RPM

Maximum torque 343 Nm @ 1500 - 2500 RPM 441 Nm @ 2000 - 2250 RPM

Fuel system Common Rail Direct injection (CRDi)

Fuel type Diesel

Emissions standard Euro 5

Bore x stroke 91.0 mm x 96.0 mm 91.0 mm x 96.0 mm

Compression ratio 16.4

Transmission 2.5 CRDi

8- SUV 4x4 Cars (8 seats)



- Max Output: 268 HP / 5600 RPM.
- Max Torque: 380 Nm / 4400 RPM.
- 5-Speed Automatic Transmission.

| | | |
|---------------------------|-------------|-------------|
| Overall Length | 5732 mm | +33 mm |
| Legroom – 2nd Row | 1068 mm | +55 mm |
| Legroom – 3rd Row | 933 mm | +56 mm |
| Cargo Room Behind 3rd Row | 1164 cu. L. | +52 cu. L. |
| Max Cargo Room | 4097 cu. L. | +651 cu. L. |



- Part Time 4WD with Transfer Case (HI/LOW)
- Fuel Tank Capacity: 159L (72L + 87L

9 - SUV 4x4 Cars (7 seats)



| | | |
|-------------------------------|-----------------|-------------------------------------|
| Engine Capicty 2.7 | | |
| Cylinders | 4 | Engine : 2.7 L, 4- CYLINDERS |
| Drive Type | All Wheel Drive | MAX Output: 164 HP / 5200 |
| Fuel Tank Capacity (liters) | 87 | RPM |
| Fuel Economy (L/100 Km) | 12.4 | 6-Speed Automatic Transmission |
| Fuel Type | Petrol | Rear Wheel Drive |
| Horsepower (bhp) | 164 | Fuel Tank Capacity . 80L |
| Torque (Nm) | 246 | Fuel Consumption: 10.7 Km/L |
| Transmission | Automatic | Dimensions L - W - H (mm) |
| Top Speed (Km/h) | 170 | 7 passengers (including the driver) |
| Seating Capacity | 7 Seater | |
| Acceleration 0-100 Km/h (sec) | 13.5 | |

10 - Golf Carts :



Golf carts come in a wide range of formats such as 2, 4, and 6 seaters and are more generally used to convey small numbers of passengers short distances at speeds less than 15 mph (24 km/h) per [ANSI](#) Standard z130.1 as originally manufactured. They are generally around 4 feet (1.2 m) wide × 8 feet (2.4 m) long × 6 feet (1.8 m) high and weigh 900 pounds (410 kg) to 1,000 pounds (450 kg).

Lamar have it's own fleet of Golf carts, served the RCU's heritage sites, since 29 Oct 2021.

11 - Shuttle van (10 seats) : VIP VAN 8 Seats



| | |
|-------------------------------|------------------|
| Engine Capacity (liters) | 2.4 |
| Cylinders | N/A |
| Drive Type | Rear Wheel Drive |
| Fuel Tank Capacity (liters) | 75 |
| Fuel Economy (L/100 Km) | 14.5 |
| Fuel Type | Petrol |
| Horsepower (bhp) | 175 |
| Torque (Nm) | 228 |
| Transmission | Automatic |
| Top Speed (Km/h) | 182 |
| Seating Capacity | 9 Seater |
| Acceleration 0-100 Km/h (sec) | 17.0 |

12 - Golf carts with special needs accessibility (4 seats) :



- Flip Down Plastic Windshield
- 5.3kw (7.1 HP) Motor
- 25 MPH Speed
- Up to 50 Mile Range
- On Board Smart Charging System
- Curtis Programmable Sepex Controller on most models
- Light Package (Head Lights, Tail Lights, Brake Lights, Turn Signals)
- Horn
- Battery Capacity Meter

- Battery Capacity Meter
- Non Slip Flooring
- Aluminum Rust Protected Rims
- Black Dash, Black Steering Wheel, Black Seat Back
- Tan Interior
- High Back Bench Seating
- Hydraulic Wheel Chair Ramp w/ Cab Switch
- Q'Straint Tie Downs and Buckles Included
- Q'Straint Tie Down Bag Included
- Driver Side Wheelchair Gate Included
- Long Extended Roof

13 - Off-road electric scooter :



NANROBOT R11 Powerful 11" Adult Scooters
60V 38AH 3600W Motor Allow Top Speed 4
KM/H and 100KM Electric 2 Wheel kick e
Scooter

14 - Hybrid bikes for adult :



- Top Speed: 25 km/h (limited to 45km/h in some regions)
- Range: 60-100km (model depending)
- Charge Time: 3.5hrs
- Weight: 32kg
- Drive: Gates Carbon Drive
- Lamar's e-bikes, served the RCU's heritage sites.
- Mercedes Manufacturer

15 - Luxury Cars for Rental:

Range Rover Vogue



G63



Lamborghini URUS



Lexus LX 570



We are committed to:

- Listen & find suitable solutions to your concerns
- Maintain a clean, safe and friendly environment
- Schedule an appointment that is convenient for you
- Attend to you promptly on arrival in a friendly and professional manner
- Provide you with an accurate service time and cost estimation
- Obtain your prior authorization before commencing any additional work
- Thoroughly explain all repairs performed and review all costs
- Ensure the vehicle is returned at the time agreed in a clean and tidy condition

16 - Luxury Cars for Rental:

Rolls Royce Ghost



Mercedes S500



Rolls Royce Phantom



BMW 740



From skyline to shoreline

Our team is dedicated to giving your guests the best travel experience possible. Here is what we've got planned:

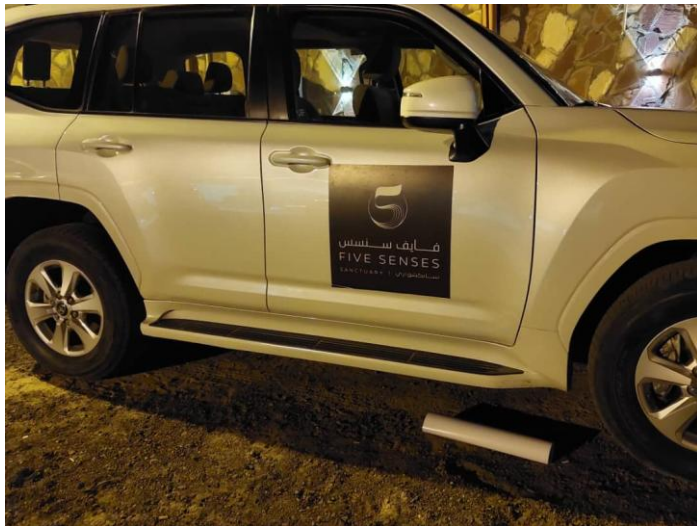
Events



Events



Events



Events



Success Partners



certificates





Certificate

CERTIFICATE

QUALITY MANAGEMENT SYSTEM

LAMAR LLC

GHIRNATAH DIST., RIYADH, KINGDOM OF SAUDI ARABIA

SCOPE

**TRANSPORTATION SERVICES, LOGISTICAL SERVICES AND OPERATING EVENTS
(HERITAGE SITES AND NATURAL RESERVES)**

This is to certify that the Quality Management System of the above-mentioned Company meets the
requirement of

ISO 9001:2015



Certificate



CERTIFICATE

**SOCIETAL SECURITY – BUSINESS CONTINUITY
MANAGEMENT SYSTEM**

LAMAR LLC

GHIRNATAH DIST., RIYADH, KINGDOM OF SAUDI ARABIA

SCOPE

**TRANSPORTATION SERVICES, LOGISTICAL SERVICES AND OPERATING EVENTS
(HERITAGE SITES AND NATURAL RESERVES)**

This is to certify that the Management System of the above mentioned Company meets the
requirement of

ISO 22301:2019

Contact Us



Project.dep@lamarltd.sa



+966561654018



www.lamarltd.sa